

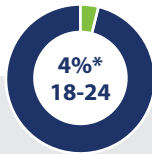
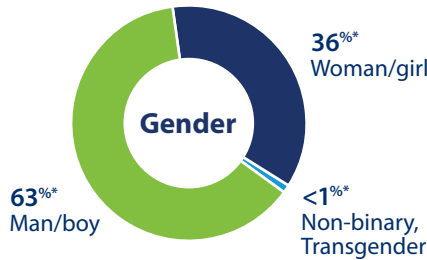
Roseville Homelessness 2026

2026 Point-in-time count results

Each year, Placer County Continuum of Care and its partners survey homeless individuals. A point-in-time count is a snapshot reflecting people experiencing homelessness the night of the count and is not an absolute number. Many people move in and out of Roseville, and homelessness, throughout a year.



50%*
Chronically homeless



109 Sheltered
39%



167 Unsheltered
61%



15 Veterans
8%*

Lived in Placer County at least 5+ years before becoming homeless:

51%*



46%*
With a mental health disorder



34%*
With a substance use disorder

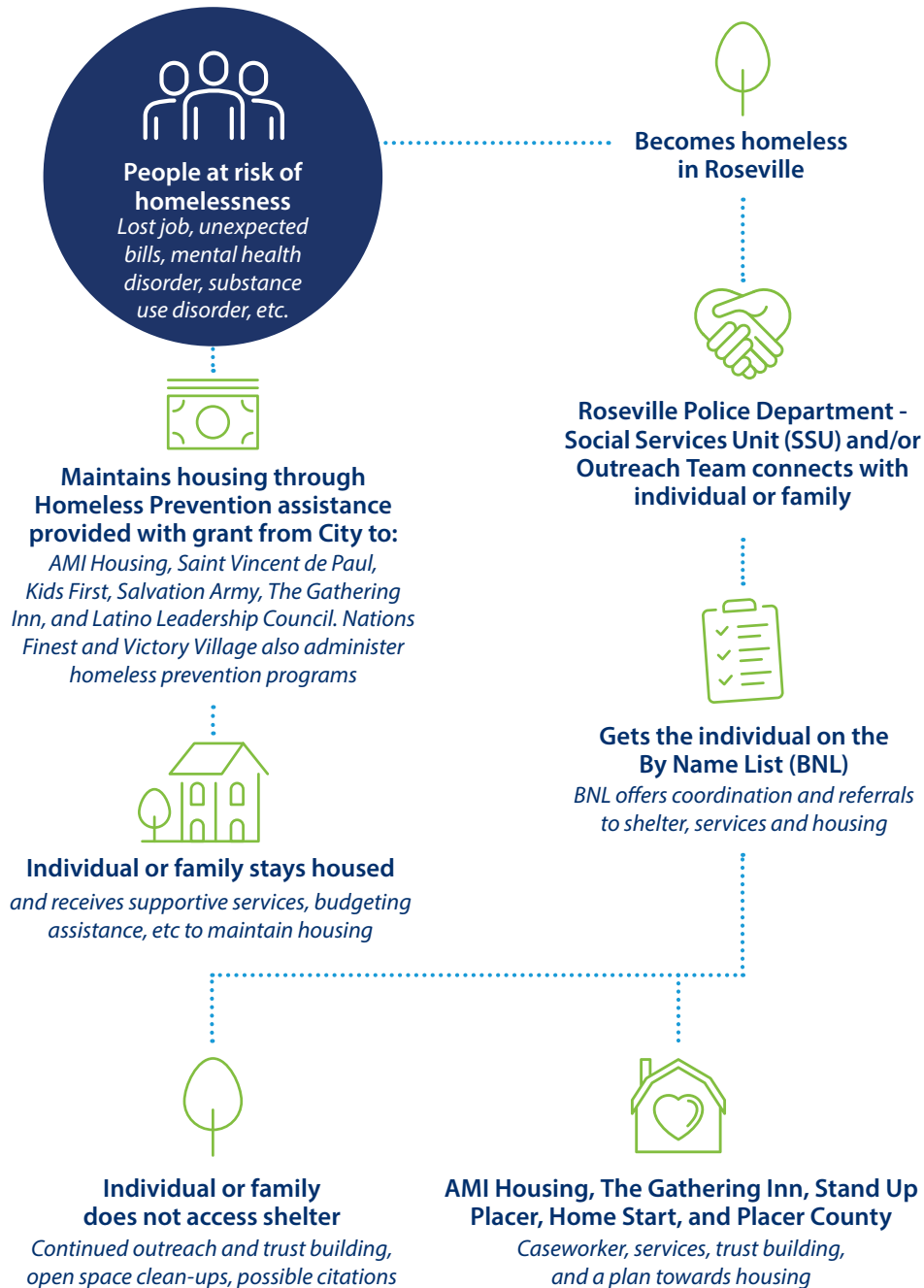


14%*
Who have lived in foster care or group homes



13%*
Currently fleeing (domestic violence, sexual assault, dating violence or stalking situation)

Roseville Homeless Response Team



City of Roseville Housing Division Successes

Built for Zero

The Placer County Built for Zero (BFZ) team is a multi-jurisdictional group that includes staff from area non-profits who meet bi-weekly to help address barriers to housing, find permanent housing, and connect to supportive services.

The goal of the BFZ initiative is to reach functional zero which is when there are fewer people experiencing homelessness than can be routinely housed. It is a milestone that indicates a community has measurably ended homelessness and are continuing to sustain that end. The team was established fall 2018 and first focused on veterans. Over the years the team has focused on people who are most vulnerable, chronic homelessness, seniors, and currently young adults ages 18-24.

Housing Choice Voucher (HCV) program

Roseville Housing Authority provides an important social service locally to ensure safe and affordable housing for residents. Through monthly rental assistance payments, the HCV Program invests over \$12 million into the local rental economy annually.

The Roseville Housing Authority currently has authorization to lease up to 840 vouchers. Of those 840, 195 are vouchers that must serve people coming from homelessness or those who are at risk of homelessness.

Spectrum of Potential Housing and Services Outcomes

- Continuing as homeless and building trust with services
- Accessing Services (*Food, Healthcare, Mental Health Services, addressing Substance Abuse, Ready to Rent program, etc.*)
- Accessing Emergency Shelter
- Accessing Transitional Housing Programs (*AMIH, Placer County, etc*)
- Obtaining a Rental Assistance Voucher (*Roseville Housing Authority, Placer County, AMIH*)
- Obtaining an Affordable Housing Unit (*Roseville Housing and affordable housing providers*)
- Living with family or friends
- Utilizing ongoing Supportive Services to maintain housing